

Lecturer in Silversmithing & Jewellery (0.7FTE)  
1 year fixed term

The Glasgow School of Art

---

The GSA is internationally recognised as one of Europe's leading university-level institutions for the visual creative disciplines. Our studio-based approach to research and teaching, brings disciplines together to explore problems in new ways to find new innovative solutions. The studio creates the environment for interdisciplinarity, peer learning, critical enquiry, experimentation and prototyping, helping to addressing many of the grand challenges confronting society and contemporary business.

The School of Design

---

The School of Design is committed to the development of design education, practice and research. Learning and teaching is studio-based and complemented by courses in Design History and Theory.

The School of Design offers undergraduate degree programmes in Interior Design, Silversmithing & Jewellery Design, Communication Design, Fashion & Textiles, Product Design and Product Design Engineering. In addition to the undergraduate courses listed above the School has developed a series of innovative postgraduate opportunities, linked to taught masters programmes and PhD study including masters programmes in Interior Design, Communication Design and Graphics, Illustration and Photography.

The School of Design's reach extends beyond the main GSA Campuses in Glasgow to include a research centre in the North of Scotland, the Centre for Design Innovation, part of a major network of innovation experts.

The Department of Silversmithing & Jewellery

---

Creating items of body decoration has never been strictly about functionality. Throughout history artifacts have been created for much more complex social purposes – as they continue to be today. Contemporary silversmiths or jewellers each have their own way of exploring and developing this relationship with the object, whether embracing traditional skills, techniques and materials, reacting against them, or building on them.

The Department provides a broad, balanced programme covering aspects of body adornment and fine metalworking from the development of original design concepts through to the finely crafted finished work. Our approach is broad – from designing for the mainstream Jewellery or silverware industries to the pursuit of very personal works intended for gallery exposure.

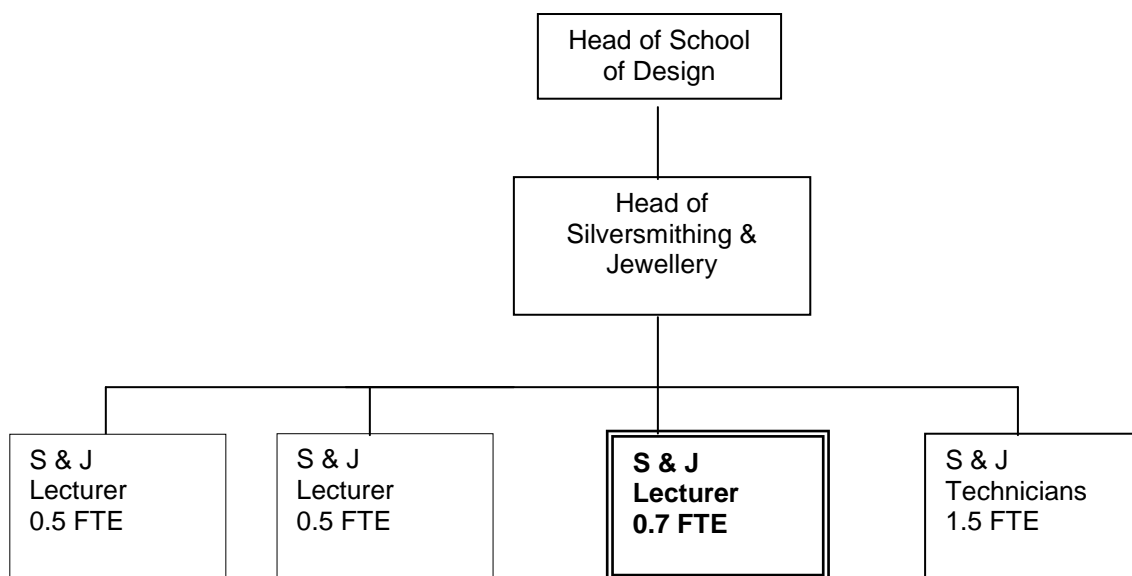
Our students are inspired to expand their knowledge and skills base, acquire a fluency of expression with a particular material, and develop a personal, individual 'voice' in a supportive and challenging educational environment.

## The Role

---

Job Title	Lecturer in Silversmithing & Jewellery (0.7FTE)
Reports to	Head of Silversmithing & Jewellery
Purpose	<p>The role will involve an appropriate balance of teaching, assessment, related administration and research, cultural exchange and curriculum development with a focus on developing international relationships with educational and cultural institutions in Japan and Asia.</p> <p>The role will also involve supporting international students across the School of Design.</p> <p>The focus of the teaching and related activity will be in the area of Silversmithing &amp; Jewellery.</p>

## Organisational Chart



## Dimensions

- 70+ staff in the School of Design

## Area

- Silversmithing & Jewellery

## People

- Staff
  - Academic staff approx 1.5FTE
  - Technical staff 1.5FTE
  - Visiting Lecturer Support

- Administrative and support staff
- Students
  - Undergraduate students within S & J: approximately 45 FTE

Areas of responsibility:

- Learning and Teaching
- Research
- Liaising with other academic, administrative, technical support staff within GSA and University of Glasgow

### Key Challenges

- Managing developments and change in the curriculum in order to maintain and extend academic excellence
- Maintaining knowledge of developments in learning and teaching and maintaining a reflective and critical view
- Actively linking the work of the studio and critical inquiry to external markets – locally, nationally and internationally
- Maintaining currency of knowledge in relation to Silversmithing and Jewellery Design in order to help maintain the relevance of the courses;
- Successfully balancing the diverse aspects of a Lecturer's role

### Principal Duties

Based within the department Silversmithing & Jewellery duties include:

- To work as part of a team of academics and technical staff and be flexible and supportive of all School of Design activity (and GSA-wide)
- To deliver the curriculum to assure maximum student potential is achieved - teaching on the BA Honours Design undergraduate program.
- To support the studio tuition of one or more undergraduate year groups
- To be actively involved in the development of learning support materials
- To contribute to the activities in the Department e.g. curriculum development, participating in quality assurance procedures, programme promotion, maintain and develop industry relations, record keeping and student assessment.
- To assist in the recruitment, selection and admission of students.
- To attend appropriate training courses when required as part of the School's academic development practices
- To lead/assist in the mounting and installation of exhibitions – departmental and/or student exhibitions
- Involvement in educational visits/trips, activities and exhibitions as directed by the Head of Department.
- To be responsive to individual student and/or group requirements
- Undertaking any other activities commensurate with the post

Contributing to research and development aims of the School of Design through:

- The pursuit of continuous personal and professional development, thereby contributing to the profile of GSA and student experience via curriculum delivery
- Creating and developing links between the Departments in the School through contributions to cross-school research projects, teaching and curriculum development
- Undertaking research to develop the research profile of the School

Other responsibilities:

- Ensuring compliance with School and GSA policies and procedures and statutory requirements (e.g. the Data Protection Act, Race Equality);
- Cooperation and compliance with Health and Safety responsibilities, to ensure the health and safety of self, as well as that of the students.

### Relationships

- Internal Contacts:
  - Working closely with other academic colleagues within S & J, with other colleagues within the School of Design, GSA as a whole,
  - Working with admin, support and technical staff
  - With working groups within the School of Art
- External Contacts:
  - Working closely with relevant external professional bodies
  - Development of international relationships through professional practice

### Background Experience/Qualifications

Qualifications

- An undergraduate degree or equivalent specialising in Silversmithing & Jewellery

Knowledge/Experience

Preferred

- A minimum of three years professional experience (may include study at Masters or PhD level) which will include experience of working in a higher education institution
- Awareness and understanding of current debates, trends and issues relating to the subject.
- Broad knowledge of Jewellery design techniques and materials investigation.
- Active researcher with a proven track record in the field of Silversmithing & Jewellery
- 

Other Skills

- IT skills – a working knowledge of word processing, email and presentation software packages
- Knowledge of a range of drawing techniques, relevant media and applications (e.g. RHINO, CAD)

## Person Specification

This role involves interaction with a wide range of staff, students and external contacts. The post holder should be able to demonstrate the following attributes and interpersonal skills.

- Strong team-working and collaboration skills
- Ability to actively engage in creative problem solving e.g. devising project briefs and monitoring of student creative activity in the same respect
- Understanding of current debates, trends and issues relating to the subject
- Adaptability and ability to adjust to the needs of a changing environment
- High level of creative interpersonal skills for teaching in a studio environment
- Strong communication skills
- Enthusiasm for learning and teaching within creative practice
- Personal drive and desire to develop new areas of research and educational activity, which may include cross school activity
- Adaptability and multi-disciplinary outlook to work with staff and students in different Departments across the School
- Awareness of and sensitivity to cultural diversity
- Commitment to equal opportunities and widening participation

## Terms and Conditions

- **Staff Development:**

A minimum of five days (pro rata) are guaranteed under HE2000 terms and conditions. However, the School is committed to encouraging staff development for all its employees which is to the benefit of the individual as well as the Institution as a whole.

- **Activity Plan:**

Duties and pattern of working will be set out in an Activity Plan. The plan will include: jointly agreed objectives including milestones and outcomes and an appropriate balance of teaching, research, consultancy, scholarly activity, personal development and other possible activities within the duties of an academic.

- **Contract:** 1 Year fixed term

- **Probationary Period:** 6 months

It is recognised that there is an inevitable 'settling in' period in any post. The probationary period is therefore an opportunity for the employee to fit within the culture of the School. It should also be determined during this time whether the job is in line with expectations as expressed in pre-appointment discussions, interview and as set out in the Job Description.

- **Salary:** £35,597 to £45,053 per annum pro rata
- **Hours** 24.5 hours per week
- **Holidays:** 35 days plus 11 public and statutory holidays per annum pro rata
- **Pension:** Option to join the Scottish Teachers' Superannuation Scheme
- **Notice Period:** 1 month